



The Romsey Archers

Kitts Merries Range Information and Code of Conduct

Document Name:	Kitts Merries Range - Information and Code of Conduct
Document Reference:	OP/24/KMR
Document Owner:	Club Secretary
Version:	Final 1.0
Last Updated:	3 October 2024

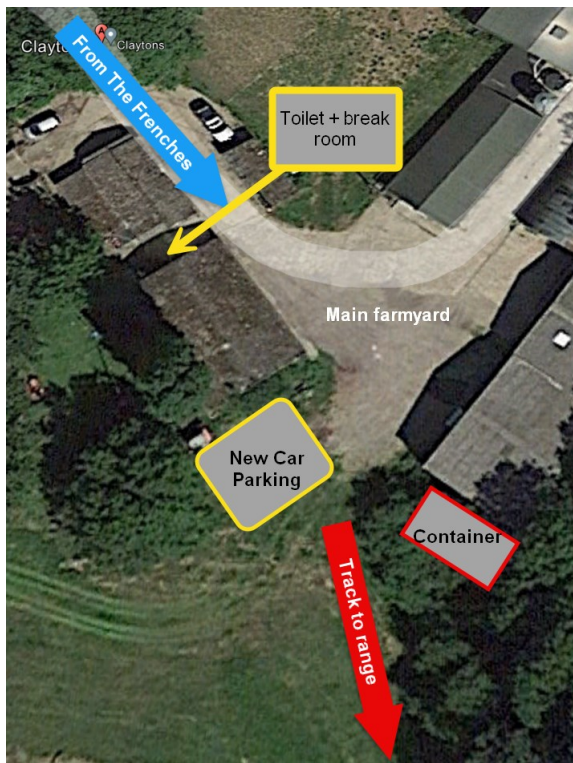
Document History

Reason for change	Status	Issue Date
Initial Draft	Draft	
Draft after committee comments	Draft	
Added KM speed limit	Final	3 Oct 2024

Site Background and Access

1. The Romsey Archers outdoor range is located at Kitts Merries Farm, The Frenches, East Wellow, Romsey SO51 6FE. The farm is accessed via a private drive signposted “Kitts Merries” at the junction where The Frenches lane turns abruptly. (See map below)
2. In the event of a site-wide emergency the assembly point for Romsey Archers is this junction of the drive with The Frenches.
3. The farm is owned by Phillip Shepherd (“Phil”) who runs an egg production, grading, packaging, and distribution company (“Claytons Eggs”) from the site. The business supplies eggs to wholesalers and commercial consumers – it does not supply eggs retail.
4. In addition to a large field for archery, the club has access to a 20ft container for equipment storage and to kitchen and toilet facilities attached to the farm. Parking facilities are also provided on site.
5. In normal circumstances access to the site is from 09.00 to sunset or 20.30 (whichever is earlier) each day of the week. If restrictions must be applied for any reason members will be notified in advance, where possible.
6. During the working week there is considerable movement of traffic – vans, articulated lorries, farm machinery etc – within the main farmyard and along the drive. Some of the farm buildings open onto the drive, so care should be exercised when arriving or leaving the farm. **There is a speed limit of 10mph on the drive into the farm.** To avoid causing an obstruction during the week members should park in the car parking area on the right, close to our container. At the weekend, when the farm is not in action, parking in front of the storage barn to the immediate left of the container is acceptable.





Range Access and Safety

7. Only members of The Romsey Archers and their guests are permitted to shoot on the range. All guests must be current members of Archery GB unless under the instructions of an Archery GB licenced coach.
8. The current Archery GB Rules of Shooting must be adhered to at all times. A copy of the rules are held in the documentation section of the members portal, or may be viewed on the Archery GB website.
9. Solo shooting by senior club archers (archers 18 years and over) is permissible as the field is on private land and warning signs are placed at the points of access. Any member shooting on their own do so at their own risk in respect of personal injuries and damage to their own property. The range is mostly out of sight of the rest of the farm. Members should make their own assessment of their fitness to shoot alone, and should make plans to stay in contact with a responsible person in case an accident or incident occurs whilst they are shooting.
10. Junior club members (archers under 18) must be supervised by an adult member, with a second adult present if the supervising adult is not the parent or guardian of the all the juniors shooting.
11. Parents or guardians may supervise their own children provided that they themselves are Archery GB members or are non-shooting members of the club who have successfully completed Field Captain training provided by the club.
12. Spectators, provided they are invited by a club member, are allowed in small numbers but must remain behind the Waiting Line at all times.
13. The range is approached via a grass track (red line on image below) starting at the container and running along the side of the wood. **Please note that there is a drainage ditch to the right of the track and archers should stay to the left of the track when approaching the range.**

14. The track swings round to the left at the end of the wood and continues alongside the trees to bring archers behind the waiting line. Do not walk directly ahead onto the range itself. Shooting must take place from the designated Shooting Line in the direction indicated by the range markers (see image below). Shooting in any other direction is not permitted.



15. Butts must be securely anchored at all times, except when being moved, to ensure that they are not blown over. For guidance on how to move a butt safely please see the “Club Guide: Moving a Butt Safely”
16. Target faces and pins can be found in the bench behind the Waiting Line and should be returned there once shooting has finished. If a target face is no longer usable please notify the Equipment Officer so that a replacement face can be provided.

17. Any damage to club or farm property must be reported to a member of the Club Committee as soon as possible including details of when and how the damage occurred.
18. Range maintenance will be carried out as and when required and takes precedence over members shooting. Shooting is strictly prohibited during these times. Scheduling of maintenance is dependent on weather, and the availability of equipment, and is not always under the control of the club. Where the club has warning of maintenance it will place an announcement in the forum of the club portal and where appropriate on the calendar. It is the responsibility of members to check for interruptions before travelling to the range.
19. Any club member not adhering to this code may be subject to action in accordance with Clause 19 of the Club Constitution.